

*Nestled  
in Nature*

BEAVER CREEK  
at kamas

**Enjoy Summer and Winter Recreation, just minutes away!  
Bond with Deer, Elk, Eagles and Osprey, all while fishing in Beaver Creek**

# BEAVER CREEK

at kamas

[www.beavercreekatkamas.com](http://www.beavercreekatkamas.com)

Mountain side  
& Creek side

.5 to 1.5 acre lots

starting at  
\$259,900

Summit County's Newest Home Sites

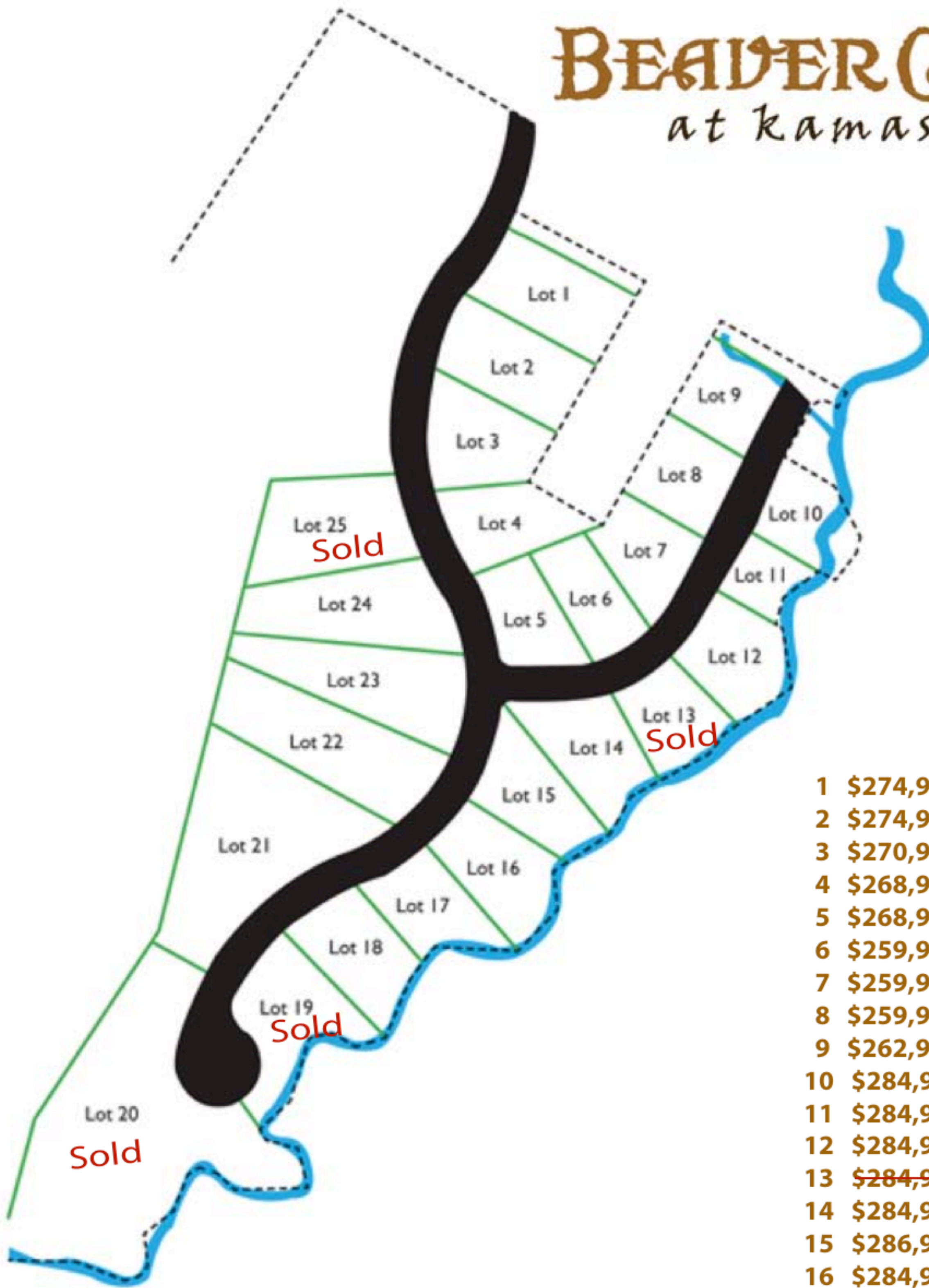
Located just off Mirror Lake Highway  
15 Minutes from cultural Park City  
45 Minutes from Downtown Salt Lake City  
20 Minutes from historic Heber/Midway  
Within walking distance to schools

Snowmobile, Ski, Hike, Bike & Camp  
the Uinta Mountains

Boating and Water Skiing at nearby  
Jordanelle, Rockport, and Deer Creek Reservoirs

# BEAVER CREEK

at kamas



1	\$274,900	32,098 sq.ft. / 0.74 Ac
2	\$274,900	32,454 sq.ft. / 0.75 Ac.
3	\$270,900	29,360 sq.ft. / 0.67 Ac.
4	\$268,900	25,545 sq.ft. / 0.59 Ac.
5	\$268,900	23,916 sq.ft. / 0.55 Ac.
6	\$259,900	22,474 sq.ft. / 0.52 Ac.
7	\$259,900	21,780 sq.ft. / 0.50 Ac.
8	\$259,900	21,780 sq.ft. / 0.50 Ac.
9	\$262,900	23,330 sq.ft. / 0.54 Ac.
10	\$284,900	22,193 sq.ft. / 0.51 Ac.
11	\$284,900	21,780 sq.ft. / 0.50 Ac.
12	\$284,900	21,780 sq.ft. / 0.50 Ac.
13	<del>\$284,900</del>	<del>21,780 sq.ft. / 0.50 Ac.</del>
14	\$284,900	21,780 sq.ft. / 0.50 Ac.
15	\$286,900	26,061 sq.ft. / 0.60 Ac.
16	\$284,900	21,780 sq.ft. / 0.50 Ac.
17	\$284,900	22,221 sq.ft. / 0.51 Ac.
18	\$284,900	21,780 sq.ft. / 0.50 Ac.
19	<del>\$289,900</del>	<del>21,900 sq.ft. / 0.50 Ac.</del>
20	<del>\$289,900</del>	<del>71,837 sq.ft. / 1.65 Ac.</del>
21	\$299,900	80,846 sq.ft. / 1.86 Ac.
22	\$282,900	46,615 sq.ft. / 1.07 Ac.
23	\$282,900	36,438 sq.ft. / 0.84 Ac.
24	\$279,900	40,120 sq.ft. / 0.92 Ac.
25	<del>\$279,900</del>	<del>43,683 sq.ft. / 1.00 Ac.</del>

**Tamara** (801)836-8154  
**Merrill** (801)360-3273  
**Office** (801)224-1367

[www.beavercreekatkamas.com](http://www.beavercreekatkamas.com)